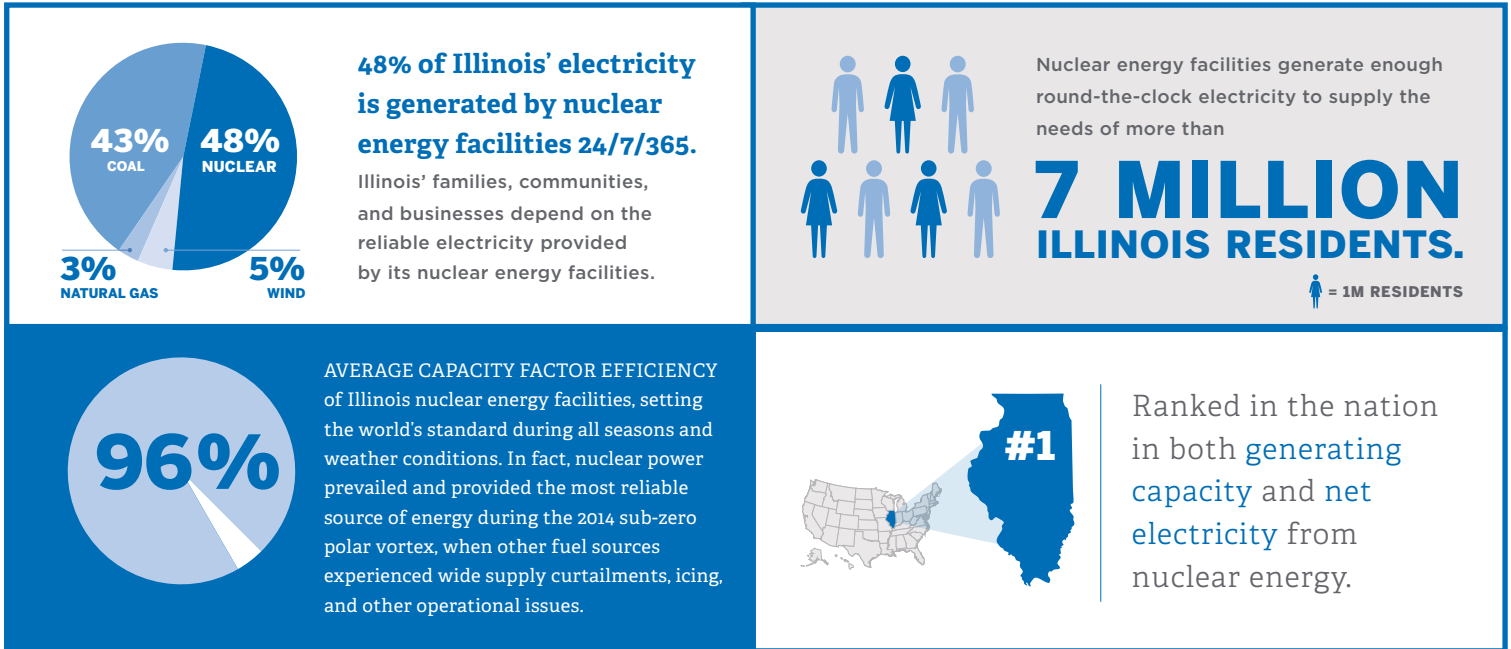


# Illinois Nuclear Facilities: Reliable Energy We Can't Afford to Lose



**Half of Illinois' energy comes from our state's reliable nuclear power plants, but some of these plants are at risk of closing. What will it cost Illinois if two of its nuclear plants close?**

ACCORDING TO A STATE OF ILLINOIS REPORT\*

**THE ILLINOIS GRID WOULD BE UNRELIABLE**  
UNDER ALL PREMATURE PLANT CLOSURE SCENARIOS.

**UP TO \$259M ANNUALLY**  
IN HIGHER ENERGY COSTS, ACCORDING TO PJM ANALYSIS.



**MEMBERS OF THE ILLINOIS GENERAL ASSEMBLY:  
ENSURE THE FUTURE OF NUCLEAR ENERGY IN ILLINOIS.**

**SOURCES:**  
Nuclear Energy Institute (NEI), "The Impact of Exelon's Nuclear Fleet on the Illinois Economy," 2014  
ICC, IPA IEPA, IDCEO, "Potential Nuclear Power Plant Closings in Illinois: Impacts and Market-Based Solutions," January 7, 2015